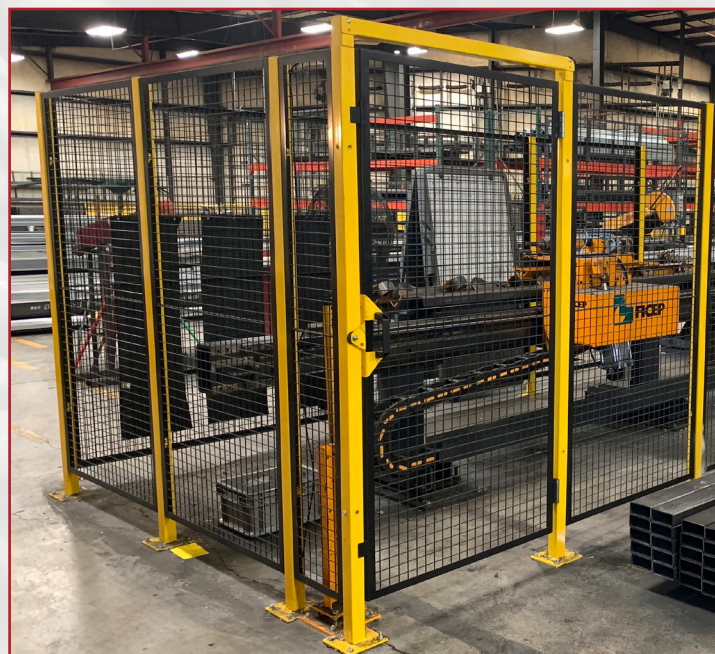
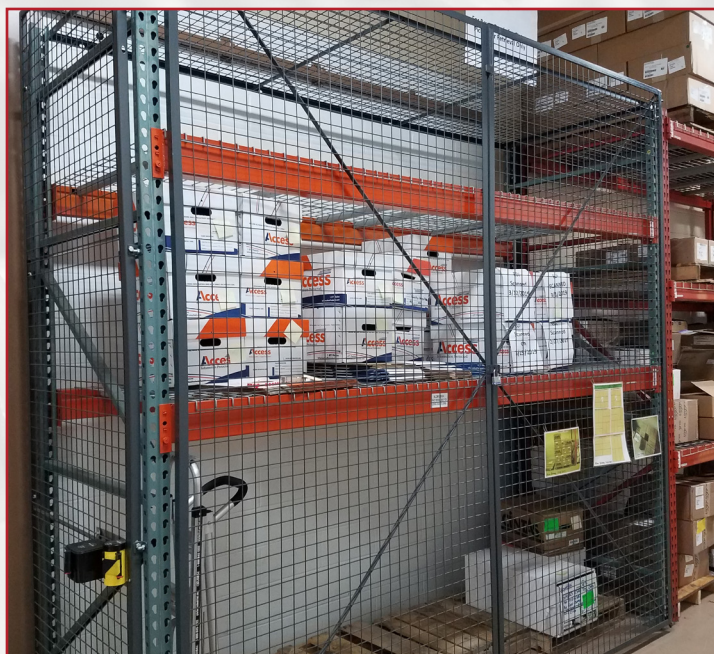
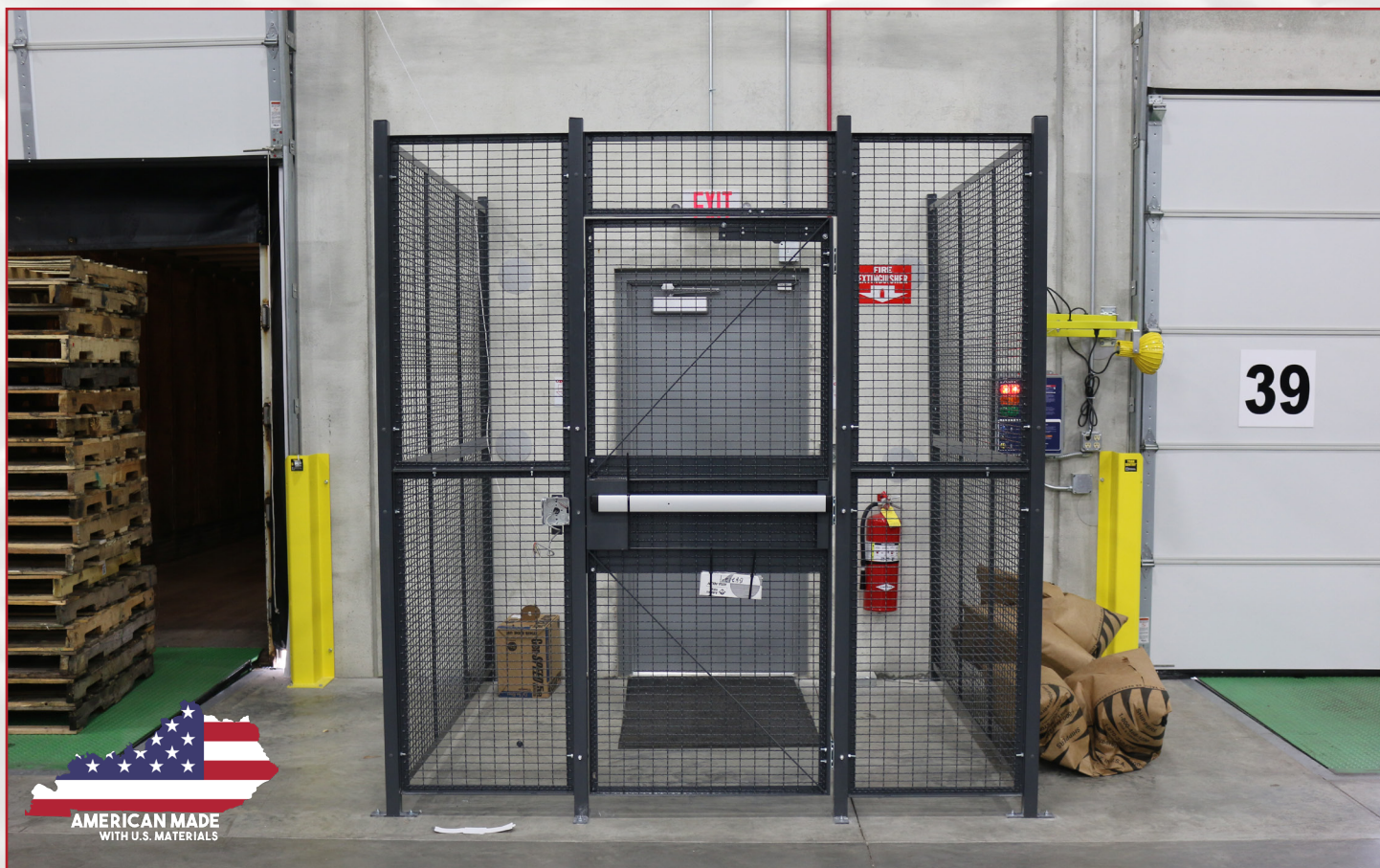


WireCrafters®

SAFETY | SECURITY | STORAGE



WHEN SAFETY & SECURITY MATTER

WireCrafters is the nation's leading manufacturer of woven and welded wire partitions & other related material handling products.

THE PROVEN STYLE OF TODAY'S WIRE PARTITION

For over 50 years, WireCrafters has manufactured the "Very Best Wire Partitions in the Industry". Contrary to traditional systems, our woven & welded wire partitions are based on the simple idea that panels stack one on top of the other between tubular posts to reach the finished partition height. This all-welded, modular stackable system has benefits unequaled in the industry.



Aerial view of the WireCrafters facility.

WIRECRAFTERS PARTITIONS

Modular Design

Twenty basic panels and our "building block" approach accomplish virtually any layout.

Strong

Panels bolt directly to support posts. Standard 3/8" wedge anchors hold partition firmly in place. Base plates welded on posts allow direct floor anchoring.

Secure

Utilizes the heaviest assembly hardware in the industry. Bolts are only accessible from inside.

Flexible

Easy to reconfigure as needs change.

Fast Installation

Fewer parts than other partition systems. Angle frames give clear access to all mounting hardware.

Clean Design

Straight lines and clean exterior make for a sleek finishing touch.

Quick Ship

Stock items are available for shipment within 48 hours of your order.



PANELS, POSTS, & CEILINGS

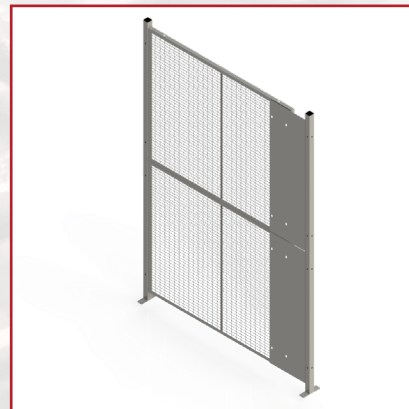
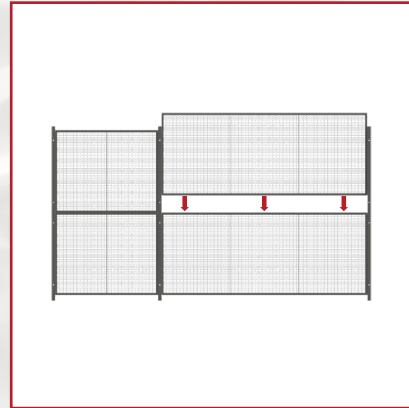
PANELS

Modular Panels

- Ten widths, 1' to 10' in one foot increments.
- Two heights: 4'-0" and 5'-0".
- Full height partition walls are built by stacking two or more panels between posts.
- Custom size panels available.
- Mesh specs available, see page 15 and back cover.

Adjustable Panel

- Solid sheet metal panel.
- Fill small gaps in runs.
- Allows for adjustment from 1" to 11".
- Ideal for hard to measure areas.
- Two heights: 4' and 5' match panel heights.



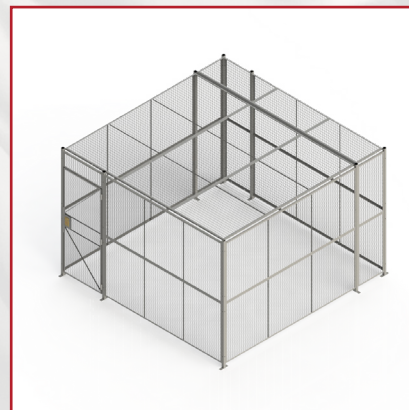
POSTS

- Stock sizes: 8'-5 1/4", 10'-5 1/4", 12'-5 1/4".
- Hole layout allows for 3-1/4" sweep-space.
- Posts extend 2" above top of panel.
- Baseplate with holes for anchors welded to posts.
- Special height posts are available up to 40'.
- Floor anchors (3/8") are included with your order.



CLEAR-SPAN CEILINGS

- Ceiling panels interchangeable with wall panels.
- Attach to partition walls with slotted angle.
- Clear spanned up to 30'.
- Large ceilings supported by horizontal ceiling tubes.
- Add to existing partition without changing layout.
- All ceilings are non-load bearing.
Ceiling cutouts or drop down doors available.



HINGED & SLIDING DOORS

HINGED DOORS

- 3' or 4' wide by 7' 3-1/4" high opening.
- Transom panel sized to match partition height.
- Three 4" x 4" 10 gauge tight pin hinges.
- Padlock lug standard, cylinder locks available.
- Complete with two door posts and hardware.
- Universal construction, works for left or right hand, inside or outside swing.
- Custom sizes available.



DOUBLE HINGED DOORS

- 6' or 8' wide by 7' 3-1/4" high opening.
- Inactive leaf secured by cane bolt (base) and chain bolt (top).
- Padlock lug standard, cylinder locks available.
- Complete with two door posts and hardware.
- Transom panel sized to match partition height.
- Universal construction with inside or outside swing.
- Custom size and no overhead obstruction doors available.



SLIDING DOORS

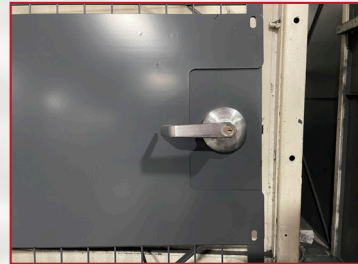
- 3', 4', 5', 6', 8' or 10' widths.
- Full height partition openings of 8' and 10'.
- Padlock lug standard, cylinder locks available.
- Complete with two door posts, two 4 wheel trolley trucks, 16 gauge track, and hardware.
- Universal construction, works for left or right hand, inside or outside slide.
- Custom sizes available.
- Patented tamper-resistant, sliding door receiver. U.S. Patent # 6196034B1



OPTIONAL DOORS & WINDOWS

UNIVERSAL HINGED DOORS

- Door can be hinged left or right
- Ability to swing in or out
- Contained in 14 gauge steel box
- ADA Lever Handles
- Push Bar Exit



SLIDING TUNNEL DOORS

- Designed for no overhead obstruction.
- Leading edge of door rolls on floor casters.
- Ideal for high fork truck traffic areas, and overhead crane access.



SERVICE WINDOWS

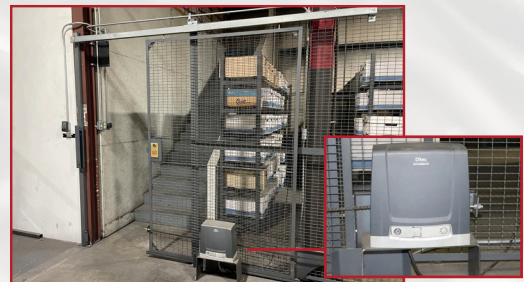
- Padlockable, slide-up, sash-balanced window
- Window opening: 24" wide x 21" high.
- Shelf size: 24" wide x 16" deep x 11 gauge.
- Shelf height: 42-1/4" off of floor level.
- Panel size: 4'-0" wide x 8'-0" high; transoms extend height to 10' or 12'.
- Custom Sizes Available



A COMPLETE LINE OF DOOR OPENERS & CLOSERS

Electric Slide Door Opener

- Uses standard 110-volt, single-phase electric motor with chain drive.
- Supplied with radio frequency remote controls, self closing timer, anti-crush safety switch, & photo eye safety switch.
- Recommended for Sliding Doors over 80 Sq. Ft.



Hinged Door Closer

- Commercial grade hydraulic door closer causes door to close and latch upon release.



Counter-Balanced Self-Closing Slide Doors

- Counter balanced weight and pulley system closes and locks door upon release.
- Counter-balanced doors up to 8' W x 10' H & not to exceed 80 Sq. Ft.



STANDARD DOOR LOCKS

Keying Options

Standard Cylinders

- Standard locks are supplied keyed different.
- Keyed alike locks available
- Optional Master Key available

Alternate Cylinders

- Any 1" mortise cylinder
- 5, 6, or 7 pin acceptable

STANDARD

Standard Front (SF-1)



ALTERNATE OPTIONS

(SF-2) Thumb-Turn Latch...

Latches only, does not lock



side-view

(SF3) Door Knob Entry...

Latches only, does not lock



(SF-4) Cylinder Less Interchangeable Core...

Accepts small format core



Standard Back (SB-1)



(SB-2) Interior Key

Lock from both sides. Keyed to match face side.



(SB-3) Door Knob

Typical sized door knob for easy exit.



(SB-4) Lever Handle

Alternative to standard door knob. Meets ADA requirements



Optional Hinged Door Locks



Lever Handles

- Available on stock universal hinged doors (see page 5)
- Storeroom function standard, other functions available



Push Bar

- Available on stock universal hinged doors (see page 5)
- Comes with key lock entry standard
- Custom lever handle or five-button coded access entry available

OPTIONAL DOOR LOCKS



Electromagnetic Lock

- 12 or 24 Volt DC - Field Selectable
- Battery Backup
- Compatible with most customer's on-site access control system or card code reader/ten-digit keypad available from WireCrafters (see below)

SLIDING DOORS ONLY



Electric Strike

- Standard 24 Volt AC; 12 Volt or DC available
- Fail Secure with key override; fail safe optional
- Compatible with most customer's on-site access control system or card code reader/ten-digit keypad available from WireCrafters (see below)

HINGE DOORS ONLY

CUSTOM DOOR LOCKS



Proximity Reader & Keypad

- Electric strike or Electromagnetic lock required
- Ten cards supplied, additional cards available
- Available on hinged and sliding doors
- Additional tracking software package available



Ten Digit Key Pad

- Electric strike or Electromagnetic lock required
- Available on hinged and sliding doors



Five-Button Coded Access Lock

- Programmable code or key entry
- Mechanical operation
- Match with thumb turn knob or push bar exit

HINGE DOORS ONLY



Adams Rite eForce Keyless Entry

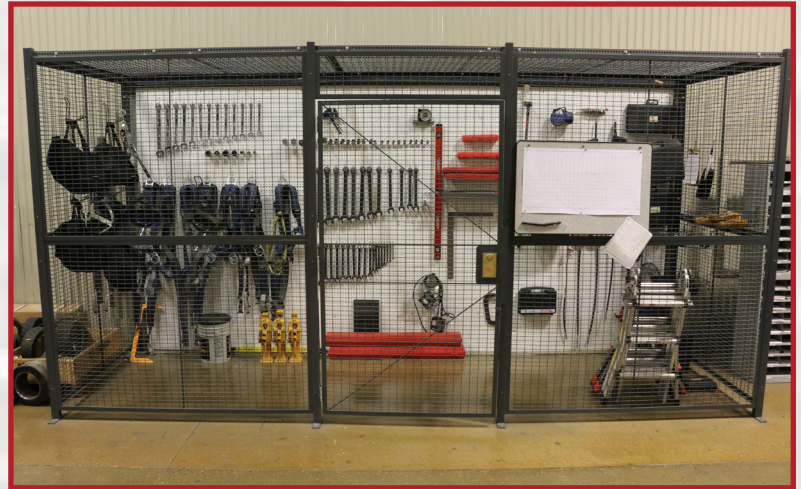
- Available on hinged and sliding doors
- Battery powered
- Ten-Digit keypad with lever handle entry

WireCrafters can prep doors for custom locks provided by others.

TOOL CRIBS & DRIVER ACCESS CAGES

TOOL CRIBS AND MAINTENANCE CAGES

- Twenty standard sized panels 4'-0" or 5'-0" high, by 1'-0" to 10'-0" wide.
- Stack two or more panels between posts to reach wall height.
- Hinged, double hinged, sliding, and vertical rise doors available.
- Angle frame design gives installer clear access to hardware, for quick installation.
- Assembly hardware is inaccessible from the secured side of the partition.
- Standard 3/8" mounting hardware is the heaviest in the industry.
- Panels may be ordered with any mesh, sheet metal, or clear polycarbonate.



DRIVER ACCESS CAGES



- Full width push bar for exit from warehouse side.
- Service window with shelf for paperwork pass through.
- Stock wall and ceiling panels constructed of 10 gauge wire, 2" x 1" rectangular opening.
- Posts have welded on base plate for lagging to the floor.

OPTIONAL STEEL BENCH

Built of heavy-duty 11-gauge steel, this all-welded bench has baseplates for anchoring to the floor. Ideal for Driver Cages or Holding Cells.



DATA CENTER & DEA CAGES

DATA CENTER CAGES



- Divide entire hosting facilities with the easily reconfigurable Style 840 Server Enclosure System.
- Our open but secure design allows free circulation of light, HVAC, and fire suppression systems throughout the server storage areas.
- An inexpensive, modular option to your network security issues.
- Designed with all of the hardware on the inside of the enclosure. With hardware only accessible from the inside, security is guaranteed.
- Ceilings are also available as an option.
- A variety of sizes and options are available.
- Allows side by side storage of server racks without wasting space while maintaining individual or multiple-rack security.

DEA APPROVED ENCLOSURES

Meets DEA Standards for Class III, IV & V Controlled Substances

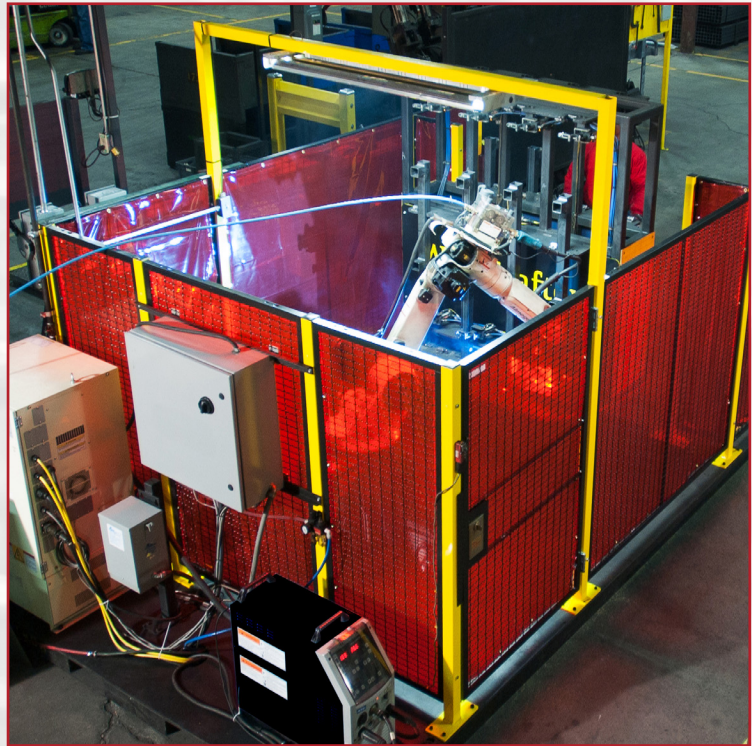
- Wall and ceiling panels constructed in a 10 GA wire woven in a 2" x 1" rectangular mesh
- Wall panels mount to posts flush to floor
- Self-closing, self-locking doors
- Clear spanned ceilings up to 30' or extended heights to roof decks
- Heavy 3/8" mounting hardware and anchors provided
- Special customization options available.



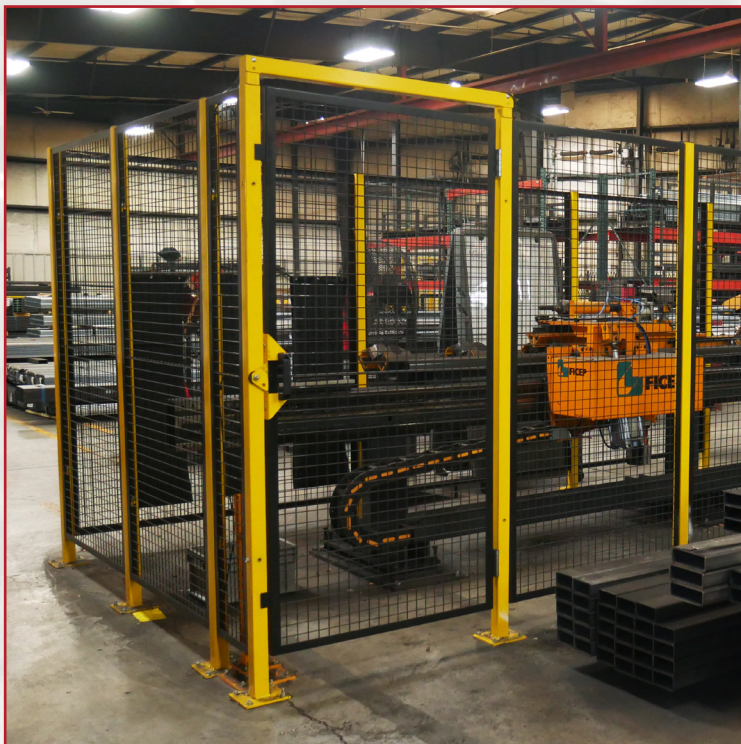
MACHINE GUARDING

Versatile, Economical, Safe...

- Simple effective way to protect personnel
- Fully-framed woven or welded wire panels bolt to posts forming a strong secure barrier
- These barriers are a durable & economical solution to plant safety needs
- Versatility of this system allows easy integration of access doors or larger openings with system controls
- Doubles as a safety net by containing malfunctioning equipment
- OSHA & ANSI/RIA compliant (R15.06-2012)
- Interlock & Interlock Mounting Plates Available



RAPIDGUARD® II LIFT OFF GUARDING



Versatile, Economical, Safe...

- Standard size panels are 6'-1 1/2"H & 8' high by 1' to 5' wide.
- Panels install vertically between 6'-3/4"H & 8'-5 1/4"H posts (4" sweep).
- Fully framed panel adds strength and stability unequalled in the industry.
- Hinged and slide doors available.
- Unique lift-off design allows for the removal of guards (panels) while the fixing system (hardware) remains attached to the guards (post), in compliance with RIA TR R15.406
- 5/16"-18 x 3/4" tool removable hardware is compliant with ANSI B11.19 and RIA TR R15.406.

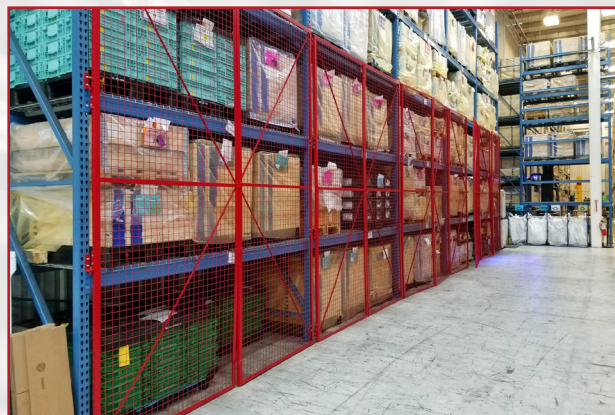


Scan for more information!

PALLET RACK SAFETY SYSTEM

RackBack® Safety Panels

- **Protect Personnel** – prevents items from falling into aisle ways
- **Quick Ship** – stock panels ship in 48 hours
- **Eleven Widths** – 1' to 10' in one foot increments and 12'
- **Two Heights** – 4'-0" & 5'-0"
Custom size panels available

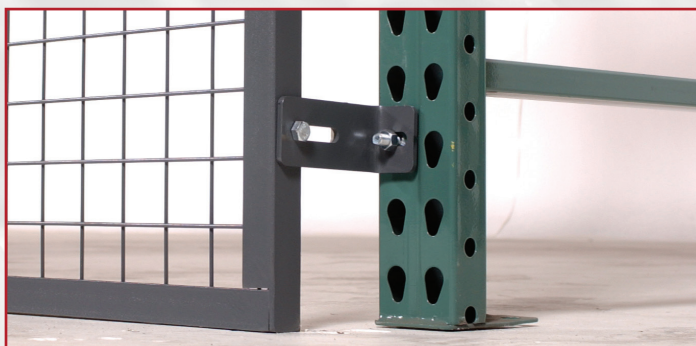


Complete Rack Enclosure

- Hinge and slide doors available with padlock lugs
- Complete Enclosure – consists of doors & panels on back & ends
- Attaches directly to face of pallet rack upright
- Prevent inventory shrinkage – secure and control high value inventory

Stock Offset Brackets

- Flush Mount
- 1" - 3"
- 4" - 6"



Custom Offset Brackets

- Mounting brackets allow for pallet overhang up to 12"
- Brackets attach directly to uprights

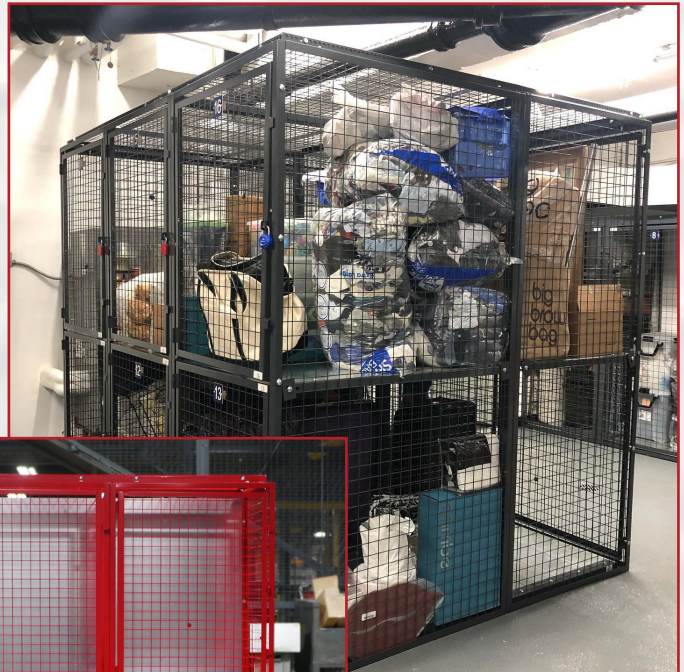
Top Beam Security

- Panels can extend above the rack to contain loads stored on top beam
- Slotted angle provided to brace panel

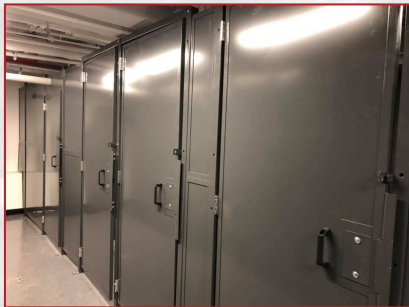
MULTI-FAMILY STORAGE

STORAGE LOCKERS

- WireCrafters' Welded Wire Storage Lockers are ideal for small enclosures. The units may be used individually or as a group.
- Two styles of lockers, single and double-tiered, are available in a variety of widths and depths. Doors are prehung in angle frames which connect directly to wall panels.
- Two-sided units fit in the corner of existing rooms. Free standing units may be installed anywhere.



Open Mesh Lockers



Sheet Metal Lockers



BIKE STORAGE

BIKE STACKER



- Made from 16 gauge steel
- Trays have exclusive tear drop tire slot (patent pending) that holds road, racing & mountain bikes in place

WALL RIDER



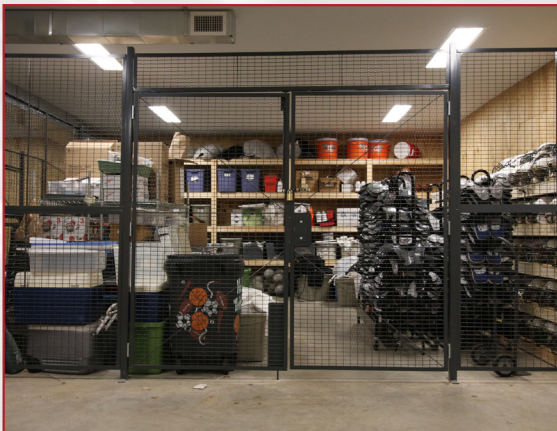
- Made of heavy duty 11 gauge (1/8" thick steel)
- Includes heavy duty 1/4" vinyl-coated aircraft quality 5' cable for securing bicycle

ALTERNATE APPLICATIONS



HOLDING CELLS

- Our Style 840 Holding Cells are designed for supervised temporary confinement while prisoners are being processed or detained for a short period of time.
- Because of the versatility of our wire partition system, the strong wire partition panels can be configured to meet facility needs utilizing our standard parts.



SCHOOLS & UNIVERSITIES

- WireCrafters modular wire partitions & indoor security fencing are ideal for schools and universities because of the many applications they can be used for.
- The most common application is found in the storage and organization of athletic equipment.



MILITARY STORAGE

- Officers prefer WireCrafters TA-50 Military Storage Lockers because of their modern look, innovative design, heavy duty materials, and quality construction.
- Quick to install and rock solid once in place, WireCrafters has supplied TA-50 Military Storage Lockers and other types of storage solutions for the demanding requirements of the military and other government agencies for years.



TECHNICIAN LOCKERS

- This unique system allows for drivers/technicians to enter the facility in a controlled environment and have all of their parts sorted and waiting in their designated lockers.
- On the reverse side, the parts manager can load all lockers from the inside of the WireCrafters cage system.
- WireCrafters Technician Locker Systems are ideal for Distribution Centers, Lift Truck Companies, Cable Companies, Plumbing Companies, Electrical Companies, HVAC Companies, Auto Tech Centers & More.

GUARDRAILS & HANDRAILS

GUARDRAIL

- Constructed from heavy-duty 11-gauge formed steel.
- Mounting columns are available in single rail (17" height) or double rail (43" height).
- Posts are 4" x 4" x 1/4" steel.
- Optional lift-out rails allow easy access to protected areas.
- Base plates are 9" square and come with four 7/8" holes for floor anchors (included).
- Ten widths, 1' to 10' in one foot increments.



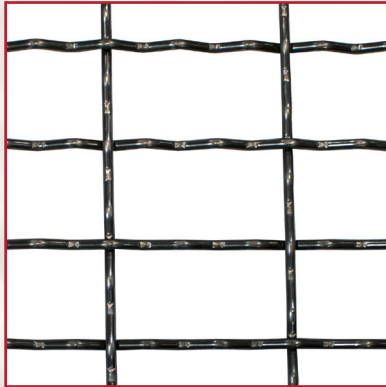
HANDRAILS

- System 22 HandRail is an excellent railing system to protect aisle ways, machines, robots and can be used as a mezzanine rail.
- This square steel rail system bolts up with standard hand tools.
- System is designed on 8'-0" centers and comes in a standard two rail style.
- A 4" high kickplate can be added as an option.
- Standard rail sections are 2', 4' and 8' in length.
- Stock rails can be field cut for custom lengths.
- The top rail is 42" high with the midrail centered 20" from the floor.
- Rails and posts are constructed of 2" square, 14 gauge steel tubing.
- Posts have a 4" x 4" base plate with 7/16" diameter mounting holes. Floor anchors not included.



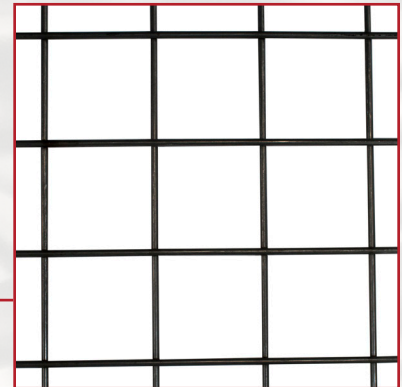
STANDARD MESH

**2" x 1" 10 Gauge
Woven Mesh**



WireCrafters signature wire mesh is a 10 gauge wire, woven into a 2" x 1" rectangular mesh.

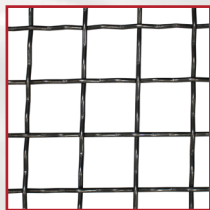
**2" x 2" 10 Gauge
Welded Mesh**



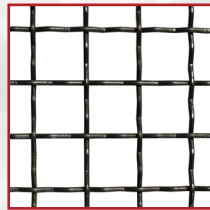
2" x 2" welded wire mesh is our most popular alternate mesh.

ALTERNATE MESH OPTIONS

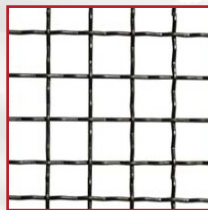
Woven Wire Mesh



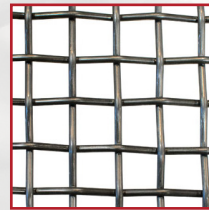
2" SQUARE 6 GA
WOVEN WIRE



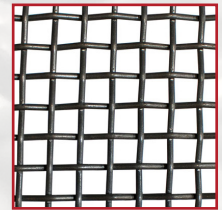
1-1/2" SQUARE 8 GA
WOVEN WIRE



1" SQUARE 10 GA
WOVEN WIRE

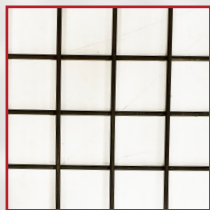


3/4" SQUARE 10 GA
WOVEN WIRE

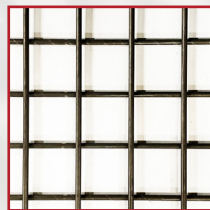


1/2" SQUARE 12 GA
WOVEN WIRE

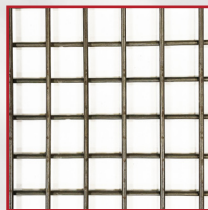
Welded Wire Mesh



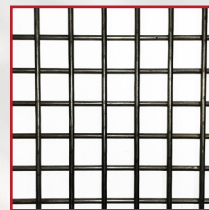
2" SQUARE 6 GA
WELDED WIRE



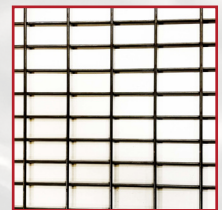
1-1/2" SQUARE 8 GA
WELDED WIRE



1" SQUARE 10 GA
WELDED WIRE

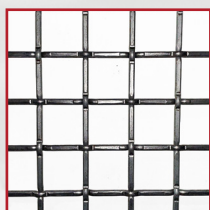


3/4" SQUARE 10 GA
WELDED WIRE

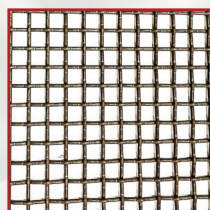


2" X 1" 10 GA
WELDED WIRE

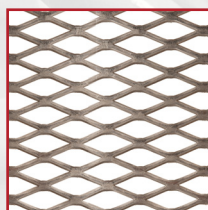
Custom Mesh & Mesh Alternatives



1" SQUARE 10 GA LOCK
CRIMP WIRE



1/2" SQUARE 10 GA LOCK
CRIMP WIRE



EXPANDED METAL



16 GA SHEET METAL



1/4" POLYCARBONATE
PANELS

Additional mesh sizes and layouts are available. Please contact us for more information.

STYLE 840 SPECS

Panels, Posts, Doors, Hardware & Finishes

PANELS

Panels constructed of 10 gauge steel wire, woven into 2" x 1" rectangular mesh and securely welded to a 1-1/4" x 1-1/4" x 1/8" steel angle frame. Frames have 7/8" x 7/16" slotted holes for mounting to posts and adjacent panels. Panels four to seven feet wide have one 1/4" x 3/4" stiffener welded to the frame. Wider panels have two stiffeners.

POSTS

Posts are made of 2" x 2" x 14 gauge (.083) steel tubing. Base plates of 2" x 7" x 1/4" steel flat with two 7/16" round holes for floor anchoring, are welded to each. Top of post is finished with decorative cap. Posts are drilled with 1/2" holes to accept hardware for mounting panels and doors. Hole spacing is set to leave a 3-1/4" sweep space below the panels. Posts have a 2" projection above the panels.

HARDWARE

All erection hardware is supplied. Panel mounting hardware is 3/8" standard thread grade two plated fasteners. Floor anchors are 3/8" wedge type.

DOORS

Doors are constructed of 10 gauge steel wire, woven into 2" x 1" rectangular mesh and securely welded to a 1-1/4" x 1-1/4" x 1/8" steel angle frame. Stiffeners, two horizontal and one vertical, of 1/4" x 3/4" steel flat are securely welded to the frame behind the mesh. Two door posts, hardware, and padlock lugs are supplied with each door. Cylinder locks are available.

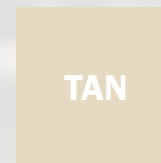
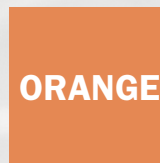
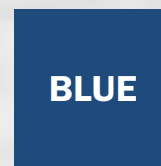
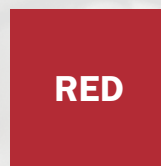
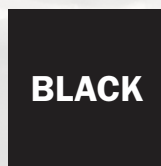
FINISH

Standard finish for non-plated parts is one coat of gray acrylic enamel. Standard gray color, optional in-stock colors and custom matched colors are available in polyester-epoxy hybrid powder coat. Unless otherwise specified all pricing is based on standard gray acrylic enamel.

STANDARD COLOR



OPTIONAL IN-HOUSE COLORS



WireCrafters®

